

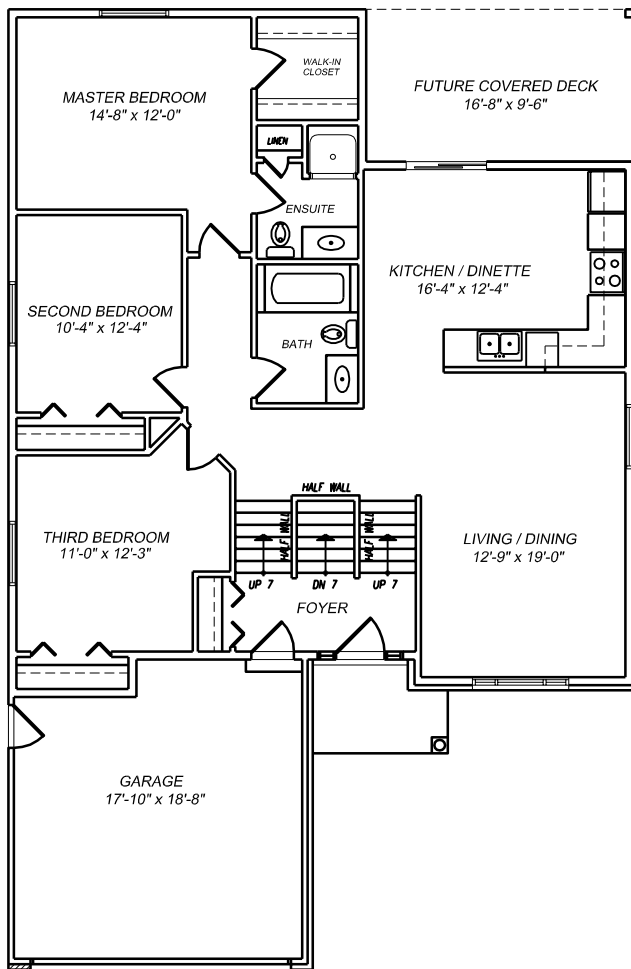


EAST POINTE LAKE
ESTATES

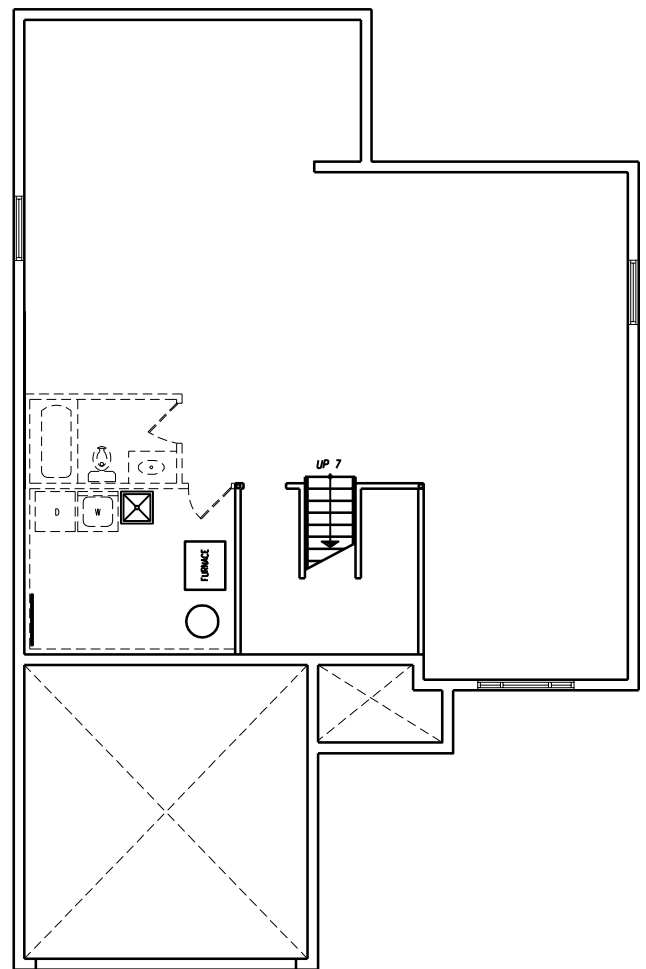
THE CRYSTAL BAY
1472 Sq.Ft.



ELEVATION



MAIN FLOOR PLAN



BASEMENT FLOOR PLAN

AUGUST 29, 2008

ORIENTATION OF HOME MAY BE REVERSED IF NECESSARY AND PURCHASER AGREES TO ACCEPT THE SAME. THE NUMBER OF STEPS AT ANY EXTERIOR ENTRANCE MAY VARY DUE TO GRADING VARIANCE. ACTUAL USABLE FLOOR SPACE MAY VARY SLIGHTLY FROM THE STATED FLOOR AREA. DIMENSIONS, SPECIFICATIONS AND ARCHITECTURAL DETAILING ARE SUBJECT TO MINOR MODIFICATIONS. E&OE.



Coco HomesTM